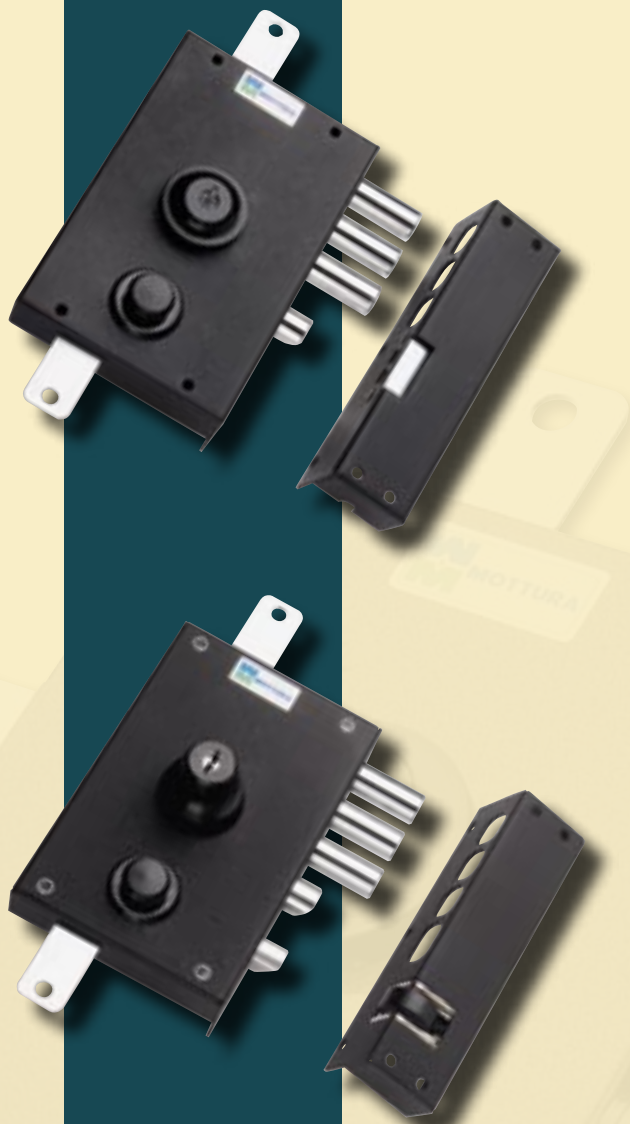


SERIE SERIES 30



SERRATURE A POMPA-CILINDRO Ø 34

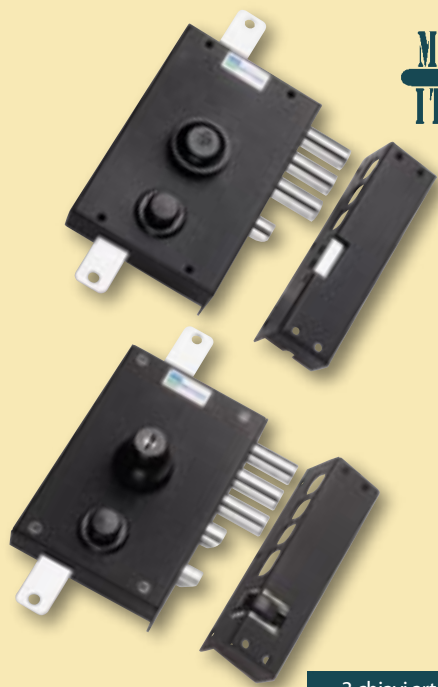
- **Con ferrogliera elettrica**
- **Con mezzo giro elettrico**

PUMP-CYLINDER RIM LOCKS Ø 34

- **With electric striker plate**
- **With electric latchbolt**



**MADE
IN
ITALY**



MADE
IN
ITALY

3 chiavi art. 92105
three keys, Art. 92105

Caratteristiche

- Laterali o triplici con mezzo giro
- Entrata chiave mm. 63
- Pompa-cilindro esterna lunghezza mm. 50 per lunghezze diverse vedere pag. 198
- Dimensioni scatola mm. 119x182x30
- Corsa chiavistelli mm. 36
- Apertura interna con chiave
- Pompa-cilindro singola o doppia
- Ferrogliera elettrica con congegno antichiusura (antiripetitore), per art. 30.010/012/030/032
- Ferrogliera per mezzo giro elettrico, per art. 30.E10/E12/E30/E32
- Alimentazione 12V C.A.
- Ferrogliera con riscontro regolabile
- Tutti gli articoli sono forniti destri e sinistri (specificare nell'ordine)
- Finitura unica: Verniciata nera

Dotazione di serie: Laterali - art. 30.010/012-30.E10/E12

- n. 3 chiavi art. 92105
- n. 1 mostrina art. 95148/N
- n. 1 ferrogliera
- viti e minuteria

Triplici art. 30.030/032- 30.E30/E32

- n. 3 chiavi art. 92105
- n. 1 mostrina art. 95148/N
- n. 1 ferrogliera
- n. 2 passanti aste art. 99152
- n. 1 cavalletto art. 99153
- n. 1 bocchetta a pavimento art. 99151
- viti e minuteria

ASTE NON COMPRESSE: vedere abbinamenti a fine sezione e in capitolo aste **93**

Characteristics

- Side or three-point lock with latchbolt
- Backset: 63 mm.
- External pump-cylinder: length 50 mm. for different lengths see page 198
- Box dimensions: 119x182x30 mm.
- Bolt travel: 36 mm.
- Opens from inside with key
- Single or double pump-cylinder
- Electric striker plate with anti-locking anti-repeating device for Art. 30.010/012/030/032
- Striker plate for electric latchbolt for Art. 30.E10/E12/E30/E32
- Power supply: 12V AC
- Striker plate with adjustable release-lever
- All articles are available in right or left version (please specify with order)
- Finish: Black enamelled only

Supplied with: Side locks - Art. 30.010/012-30.E10/E12

- 3 keys, Art. 92105
- 1 escutcheon, Art. 95148/N
- 1 striker plate
- screws and small parts

Three-point locks Art. 30.030/032-30.E30/E32

- 3 keys, Art. 92105
- 1 escutcheon, Art. 95148/N
- 1 striker plate
- 2 bar collars, Art. 99152
- 1 clasp, Art. 99153
- 1 floor striker plate, Art. 99151
- screws and small parts

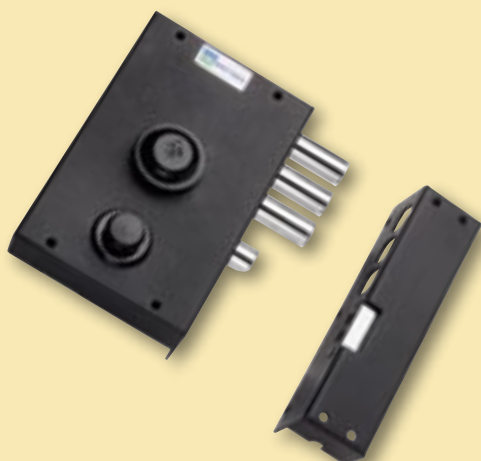
BARS NOT INCLUDED: see at the end of section or chapter **93**

30.010



Finitura/Finish

Verniciata nera
Black enamelled



30.012



Finitura/Finish

Verniciata nera
Black enamelled



Laterale con ferrogliera elettrica,
art. 94082
Apertura interna con chiave
Pompa esterna

Side lock with electric striker plate,
art. 94082
Opens from inside with key
External pump

Laterale con ferrogliera elettrica,
art. 94082
Apertura interna con chiave cifrata
Doppia pompa esterna/interna

Side lock with electric striker plate,
art. 94082
Opens from inside with coded key
External/internal double pump

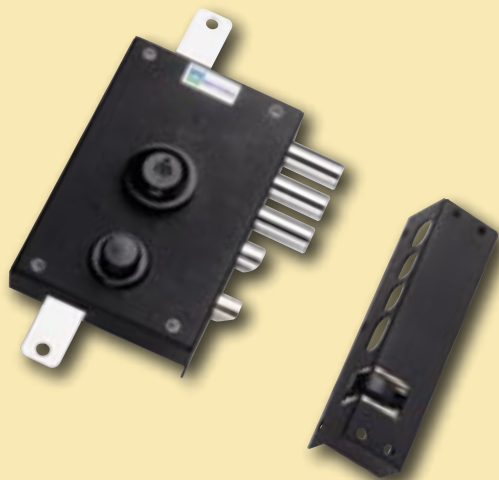
<h2>30.030</h2>				<h2>30.032</h2>			
<p>Finitura/Finish Verniciata nera Black enamelled</p>				<p>Finitura/Finish Verniciata nera Black enamelled</p>			
 <p>12V</p>				 <p>12V</p>			
<p>Triplice con ferrogliera elettrica, art. 94082 Apertura interna con chiave Pompa singola esterna Aste NON comprese</p>		<p>Three-point lock with electric striker plate, art. 94082 Opens from inside with key External single pump Bars NOT included</p>		<p>Triplice con ferrogliera elettrica, art. 94082 Apertura interna con chiave cifrata Doppia pompa esterna/interna Aste NON comprese</p>		<p>Three-point lock with electric striker plate, art. 94082 Opens from inside with coded key External/internal double pump Bars NOT included</p>	
<h2>30.E10</h2>				<h2>30.E12</h2>			
<p>Finitura/Finish Verniciata nera Black enamelled</p>				<p>Finitura/Finish Verniciata nera Black enamelled</p>			
 <p>12V</p>				 <p>12V</p>			
<p>Laterale con mezzo giro elettrico e ferrogliera, art. 94335 Apertura interna con chiave Pompa esterna</p>		<p>Side lock with electric latchbolt and striker plate, art. 94335 Opens from inside with key External pump</p>		<p>Laterale con mezzo giro elettrico e ferrogliera, art. 94335 Apertura interna con chiave cifrata Doppia pompa esterna/interna</p>		<p>Side lock with electric latchbolt and striker plate, art. 94335 Opens from inside with coded key External/internal double pump</p>	

30.E30



Finitura/Finish

Verniciata nera
Black enamelled



30.E32



Finitura/Finish

Verniciata nera
Black enamelled



Triplice con mezzo giro elettrico e ferrogliera art. 94335
Apertura interna con chiave
Pompa singola esterna
Corsa aste mm. 20
Aste **NON** comprese

Three-point lock with electric latchbolt and striker plate, art. 94335
Opens from inside with key
External single pump
Bar travel: 20 mm
*Bars **NOT** included*

Laterale con mezzo giro elettrico e ferrogliera art. 94335
Apertura interna con chiave cifrata
Doppia pompa esterna/interna
Corsa aste mm. 20
Aste **NON** comprese

Side lock with electric latchbolt and striker plate, art. 94335
Opens from inside with coded key
External/internal double pump
Bar travel: 20 mm
*Bars **NOT** included*

94.082

Finitura/Finish

Verniciata nera
Black enamelled



94.335



Ferrogliera elettrica bassa
Congegno automatico antichiusura (antiripetitore) - Riscontro regolabile
Alimentazione: 12V C.A. (trasformatore 25 VA)
Per serrature art. 30.010/012/030/032
Specificare la finitura e l'articolo su cui viene montata
L'articolo viene fornito destro o sinistro (specificare nell'ordine)

Lower electric striker plate
Automatic anti-closure device (antirepeater) - Adjustable strike
Power supply: 12V AC (25 VA transformer)
For locks
Art. 30.010/012/030/032
Specify the finish and the article it is to be installed on
The article is available in a right or left version (please specify with order)

Ferrogliera con riscontro regolabile per art. 30.E10/E12/E30/E32

Striker plate with adjustable release - lever for art. 30.E10/E12/E30/E32

ASTE / BARS

Per altre ASTE, vedere capitolo 93 / For other bars, see chapter 93

93.140

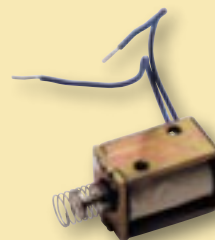
Finitura/Finish

Verniciate nere
Black enamelled



VARIE / VARIOUS

99.635



Coppia aste Ø mm. 18
registrabili da cm. 152 a cm. 270 totale
n. 1 da 76 a 131; n. 1 da 76 a 139

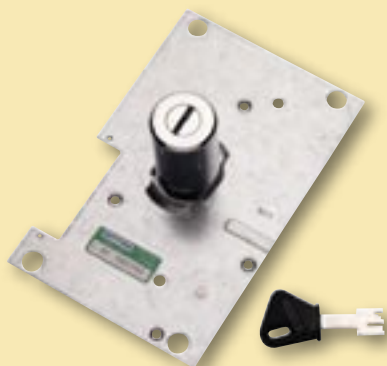
Set of 2 Ø 18 mm. bars
adjustable from 152 cm. to max. 270 cm.
(1 from 76 to 131 - 1 from 76 to 139)

Elettromagnete per art. 30E10/32
Alimentazione 12V AC-DC
Potenza 15VA

Electromagnet for Art. 30E10/32
Alimentation 12V AC-DC
Power 15VA

POMPE-CILINDRO DI RICAMBIO / PUMP-CYLINDER

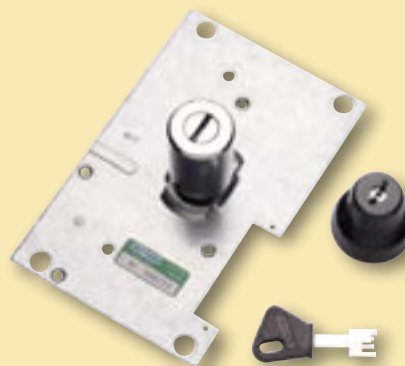
Articolo/Article	Misura/Measurement
91.298	mm. 50-60
91.298	mm. 70-80
91.298	mm. 90-100



Pompa esterna per art. 30E10/30E30
Specificare la misura e la versione
(dx o sx)

External pump for Art. 30E10/30E30
Specify length and version
(right or left)

Articolo/Article	Misura/Measurement
91.299	mm. 50-60
91.299	mm. 70-80
91.299	mm. 90-100



Doppia pompa-cilindro
per art. 30E12/30E32
Specificare la misura e la versione
(dx o sx)

Double pump-cylinder
for Art. 30E12/30E32
Specify length and version
(right or left)

