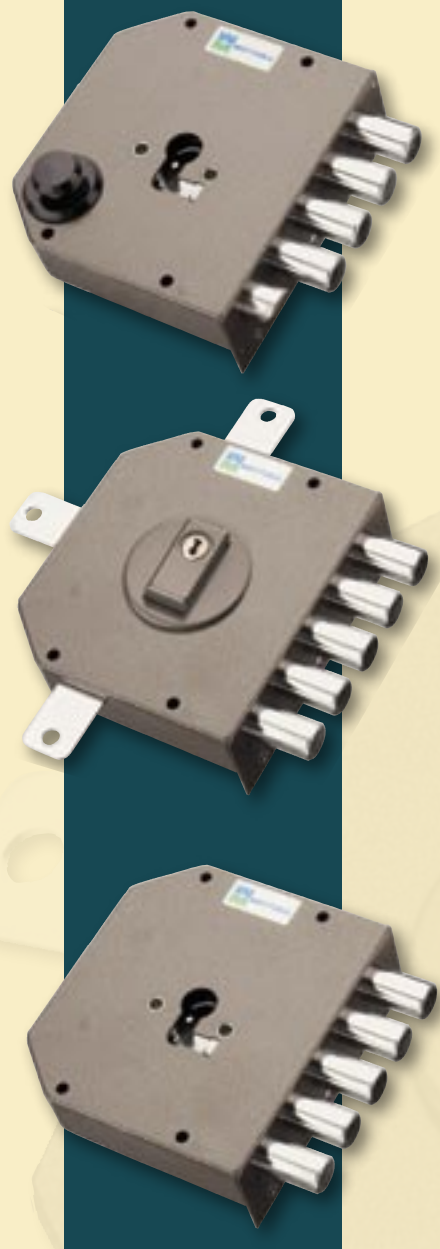


# SERIE SERIES 38

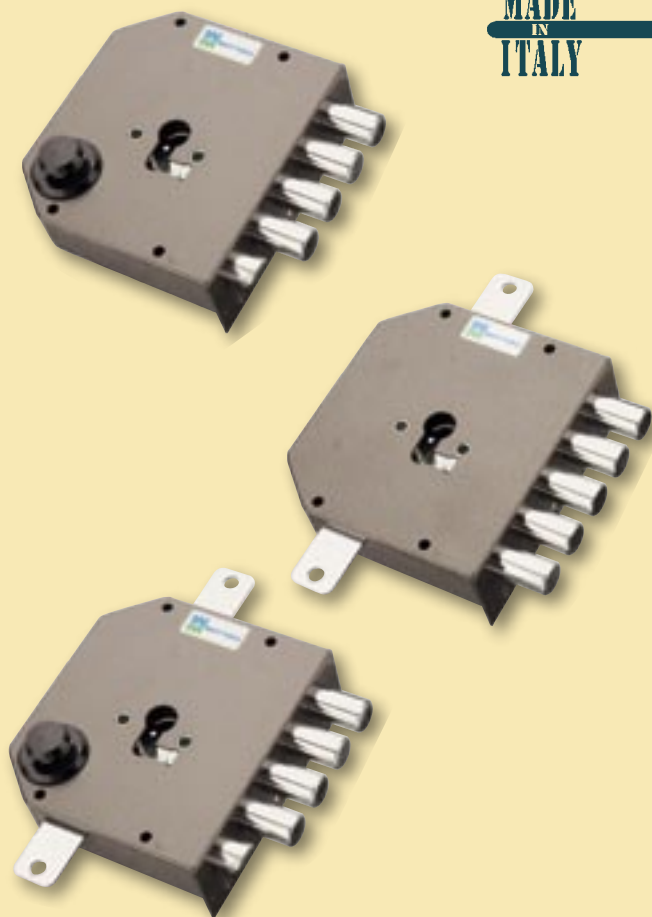


**SERRATURE DA APPLICARE  
PER CILINDRO EUROPEO**  
**RIM LOCKS  
FOR EUROPFILE CYLINDER**



**MADE  
IN  
ITALY**

**MADE  
IN  
ITALY**



## Caratteristiche

- Fissaggio del cilindro senza vite in testa
- Entrata cilindro mm. 63
- Serrature laterali, triplici o quintuplici
- Dimensioni scatola mm. 132x146x30
- Corsa chiavistelli mm. 30
- Tutti gli articoli sono forniti destri e sinistri (specificare nell'ordine)
- Finitura unica: Verniciata

**Avvertenze:** in caso di sostituzione di serrature a pompa oppure doppia mappa con gli articoli 38.640/641/642 e 38.650/651/652, occorre utilizzare il deviatore art. 96.145 anziché l'art. 96.143

Per i disegni tecnici vedere capitolo **96**

Si raccomanda di utilizzare i kit Defender® per una maggiore protezione della serratura e del cilindro. Vedere serie **94**

**ASTE E DEVIATORE NON COMPRESI:** vedere a fine capitolo e in serie **93, 96**

## Characteristics

- Fixing without cylinder screw
- Backset: 63 mm
- Side, three-point or five-point locks
- Box dimensions: 132x146x30 mm
- Bolt travel: 30 mm
- All articles are available in right and left versions (please specify with order)
- Finish: Brown enamelled only

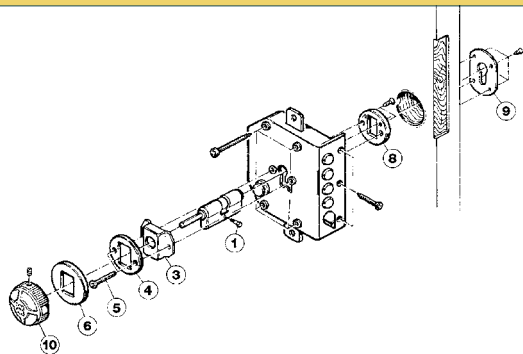
**Warning:** When replacing pump or double-bitted locks with Articles 38.640/641/642 and 38.650/651/652, switchlock Art. 96.145 must be used instead of switchlock Art. 96.143

See section **96** for technical drawings

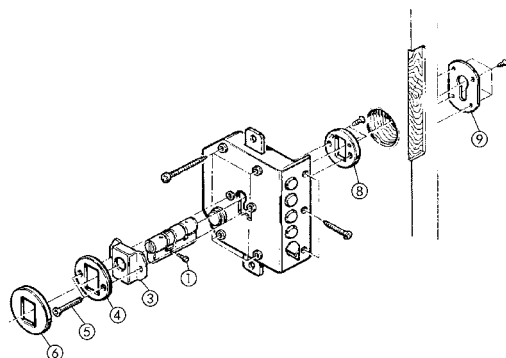
It is recommended to use Defender® kits for greater protection of the lock and cylinder. See series **94**

**BARS AND SWITCHLOCK NOT INCLUDED** see at the end of chapter or **93, 96** series

### ESEMPIO DI MONTAGGIO CON CILINDRO "PREDISPOSIZIONE POMOLO + CHIAVE" EXAMPLE OF INSTALLATION WITH CYLINDER WITH KNOB + KEY PROVISION



### ESEMPIO DI MONTAGGIO CON CILINDRO "CHIAVE + CHIAVE" EXAMPLE OF INSTALLATION WITH DOUBLE CYLINDER



## Caratteristiche

### Laterali - art. 38600/610

- particolari fissaggio cilindro 1-3-4-5-6-8
- n. 1 mostrina (9) art. 95297/B
- n. 1 ferrogliera art. 94122
- viti e minuteria

### Triplici - art. 38620/630

- particolari (1 - 3 - 4 - 5 - 6 - 8)
- n. 1 mostrina (9) art. 95297/B
- n. 1 ferrogliera art. 94122
- n. 2 passanti per aste art. 99152
- n. 1 cavallotto art. 99153
- n. 1 bocchetta a pavimento art. 99151
- viti e minuteria

### Quintuplici - art. 38640/650

- particolari (1 - 3 - 4 - 5 - 6 - 8)
- n. 1 mostrina (9) art. 95297/B
- n. 1 ferrogliera art. 94122
- n. 2 passanti per aste art. 99152
- n. 1 cavallotto art. 99153
- n. 1 bocchetta a pavimento art. 99151
- viti e minuteria

Da richiedere a parte:

- cilindro
- protezione esterna del cilindro Defender® in sostituzione della piastrina di fissaggio (8)
- aste e deviatore

## Characteristics

### Side - Art. 38600/610

- parts for fixing cylinder 1-3-4-5-6-8
- 1 escutcheon (9), Art. 95297/B
- 1 striker plate, Art. 94122
- screws and small parts

### Three-point - Art. 38620/630

- parts (1-3-4-5-6-8)
- 1 escutcheon (9), Art. 95297/B
- 1 striker plate, Art. 94122
- 2 bar collars, Art. 99152
- 1 clasp, Art. 99153
- 1 floor striker plate, Art. 99151
- screws and small parts

### Five-point - Art. 38640/650

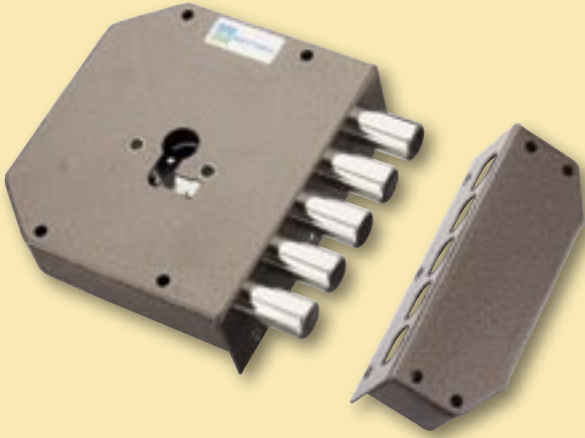
- parts (1-3-4-5-6-8)
- 1 escutcheon (9), Art. 95297/B
- 1 striker plate, Art. 94122
- 2 bar collars, Art. 99152
- 1 clasps, Art. 99153
- 1 floor striker plates, Art. 99151
- screws and small parts

To be ordered separately:

- cylinder
- Defender® external cylinder protection to replace fixing plate (8)
- bars and switchlock

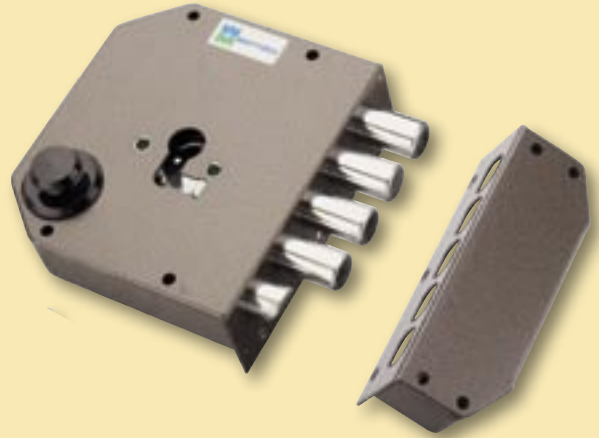
## 38.600

**Finitura/Finish**  
Verniciata  
Brown enamelled



## 38.610

**Finitura/Finish**  
Verniciata  
Brown enamelled



Laterale

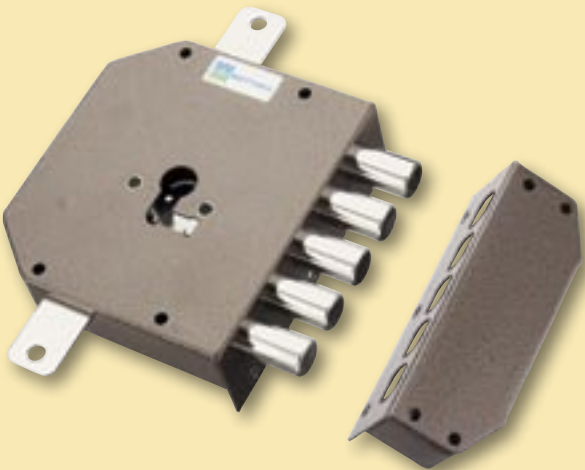
Side

Laterale con mezzo giro

Side with latchbolt

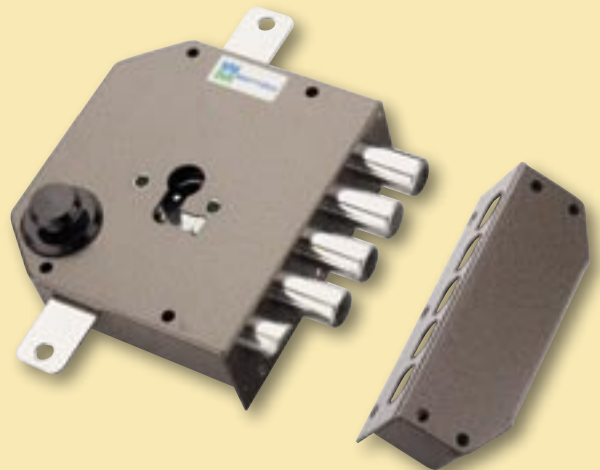
## 38.620

**Finitura/Finish**  
Verniciata  
Brown enamelled



## 38.630

**Finitura/Finish**  
Verniciata  
Brown enamelled



Triplice  
Aste **NON** comprese

Three-point  
Bars **NOT** included

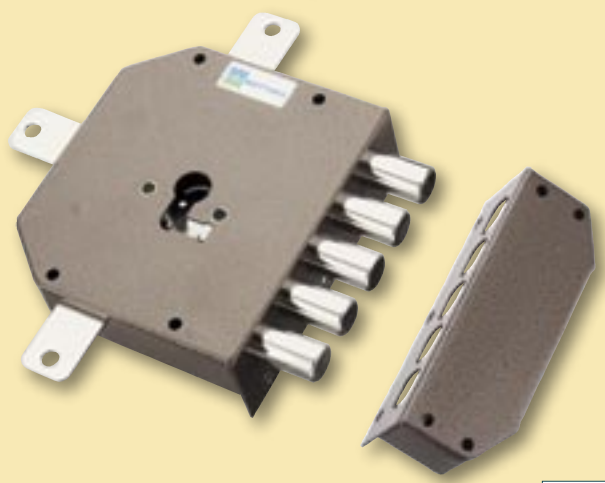
Triplice con mezzo giro  
Aste **NON** comprese

Three-point with latchbolt  
Bars **NOT** included

SERRATURE DA APPLICARE PER CILINDRO EUROPEO / RIM LOCKS FOR EUROPROFILE CYLINDER

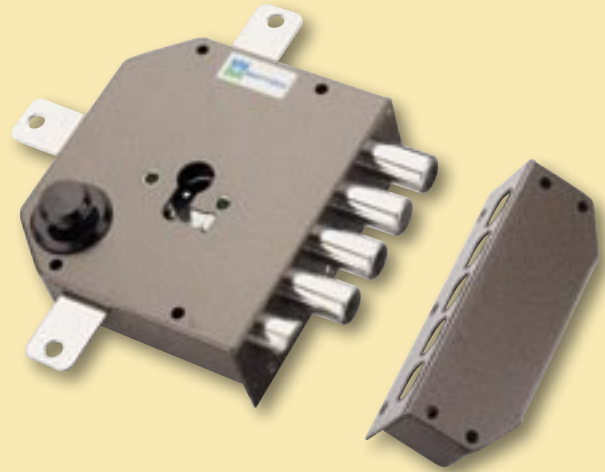
## 38.640

**Finitura/Finish**  
Verniciata  
Brown enamelled



## 38.650

**Finitura/Finish**  
Verniciata  
Brown enamelled



Quintuplice  
Aste e deviatore **NON** compresi

*Five-point*  
*Bars and switchlock **NOT** included*

Quintuplice con mezzo giro  
Aste e deviatore **NON** compresi

*Five-point with latchbolt*  
*Bars and switchlock **NOT** included*

## ASTE E DEVIATORE / BARS AND SWITCHLOCK

Per altre ASTE, vedere capitolo 93 / For other bars, see chapter 93

### 93.140

**Finitura/Finish**

Verniciate  
Brown enamelled



### 93.141

**Finitura/Finish**

Verniciate  
Brown enamelled



Coppia aste Ø mm. 18  
registrabili da cm. 152  
a cm. 270 totale  
n. 1 da 76 a 131; n. 1 da 76 a 139

Set of 2 Ø 18 mm. bars  
adjustable from 152 cm.  
to max. 270 cm.  
(1 from 76 to 131 - 1 from 76 to 139)

Confezione di n. 5 aste Ø mm. 18  
registrabili: n. 2 da cm. 76 a cm. 131;  
n. 2 da cm. 76 a cm. 139;  
n. 1 da cm. 49,5 a cm. 80

Set of 5 adjustable Ø 18 mm. bars  
2 adjustable from 76 cm. to 131 cm.  
2 adjustable from 76 cm. to 139 cm.  
1 adjustable from 49.5 cm. to 80 cm.

### 96.145

**Finitura/Finish**

Verniciato  
Brown enamelled



Deviatore per serrature quintuplici  
da applicare serie 38

Switchlock for 5-point  
rim locks series 38



Nolimal d.o.o.  
Cesta pod goro 42, 1353 Borovnica, Slovenija  
tel.: 01/754 83 60, fax: 01/754 83 61,  
[www.nolimal.si](http://www.nolimal.si); [info@nolimal.si](mailto:info@nolimal.si)