

Rosengrens AT-Dep Pro

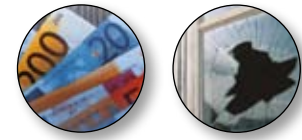
Secure deposit and storage of valuables



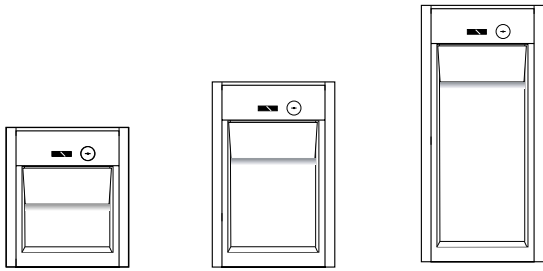
Rosengrens AT-Dep Pro is a professional burglar-resistant deposit safe that has been tested and certified according to the European standard for deposit safes in Grades DI and DII. The deposit safe AT-Dep Pro is available in 3 models and is a good alternative to deposit and store money and valuables in a secure way. When depositing, the deposit drawer is pulled out and the money falls down into the protected area. You can easily deposit money into the safe while it remains locked, which means that the personnel, without access to codes or keys, can deposit money at any time day or night. The various interior fittings give the possibility to provide storage of valuables in the areas not used for deposits.

Rosengrens AT-Dep Pro

Secure deposit and storage of valuables



RSGB.1054R2



AT-Dep Pro 52

AT-Dep Pro 72

AT-Dep Pro 104

Product data

Model AT-Dep Pro	External dimensions (mm)			Internal dimensions (mm)			Weight (kgs)		Vol.** (lit)
	Height	Width	Depth	Height/Height*	Width	Depth	Grade DI	Grade DII	
52	615	540	490	414/237	460	320	229	235	35
72	815	540	490	614/437	460	320	332	340	64
104	1135	540	490	934/757	460	320	426	434	111

* Drawer excluded/Drawer and anti-fishing device excluded ** Excl. anti-fishing device

Deposit: Rosengrens AT-Dep Pro is very easy to handle. When depositing, the deposit drawer is pulled out and the money is placed in a special compartment. The drawer is then closed, and the money falls down into the protected area without any chance for the person who deposited the money to reach anything in the safe. The "pull-resistance" of the deposit drawer is very high and the deposit drawer is equipped with an anti-fishing device preventing any manipulation.

Burglary protection: Rosengrens AT-Dep Pro is a professional burglary-resistant deposit safe which has been tested according to the European norm Standard Deposit EN 1143-2 and certified by ECB•S and SBSC in Grades DI and DII.

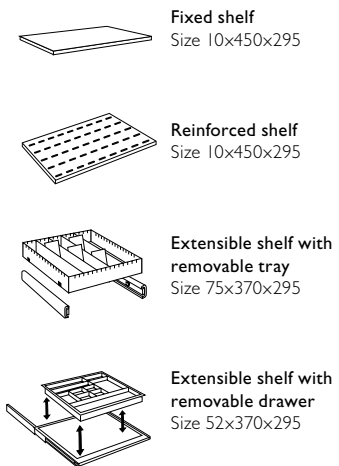
Locks: As standard AT-Dep Pro is equipped with a high-security, resettable key lock on the safe door. As an option, Rosengrens' electronic lock, REL, or a mechanical combination lock is available. The drawer is fitted with a resettable key lock as standard, with REL as an option.

Design: The attractive design and colour in off-white, make it easy to fit in any modern environment. The model AT-Dep Pro 52 is suitable to place under the desk. The deposit safe is prepared for anchoring to the floor or back wall.

Quality and environmental management systems: Rosengrens AT-Dep Pro deposit safes are manufactured in accordance with the ISO 9001 quality management system and the ISO 14001 environmental management system.

Quality control: Rosengrens AT-Dep Pro has been developed and continuously tested according to the Rosengrens Quality Guidelines which include several criteria relating to existing European norms with the aim of guaranteeing quality, user safety and assuring customers that the products live up to the highest expectations.

Interior fittings



Drawer dimensions

Internal dimensions (mm)		
Height	Width	Depth
78	359	236

External depth when drawer is open/
safe door – 296 mm excl. handle + lock